

# Schneider M340/M580 Series (Symbolic Addressing) (Ethernet)

Supported Series: Schneider M340/M580 series (Support firmware v2.70 or later)

Website: <http://www.schleicher-electronic.com>

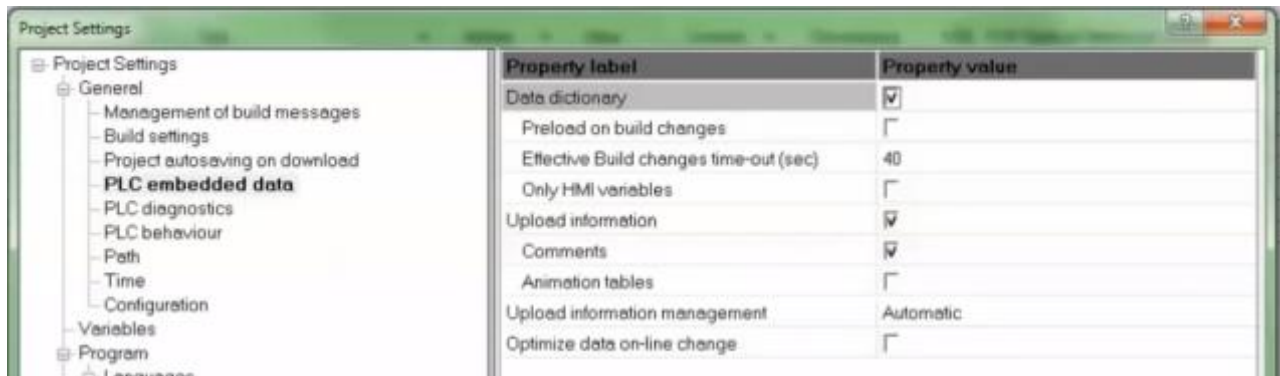
## HMI Settings:

Parameters	Recommended	Options	Notes
<b>PLC type</b>	Schneider M340/M580 Series (Symbolic Addressing) (Ethernet)		
<b>PLC I/F</b>	Ethernet		
<b>Port no.</b>	502		

## PLC Settings:

<b>Data dictionary</b>	Enable
------------------------	--------

Tools -> Project Settings -> PLC embedded data -> Activate the Data Dictionary



## Support Device Type:

Data Type	EasyBuilder data format	Memo
BOOL	bit	*Note1
EBOOL	bit	*Note1
BYTE	16-bit BCD, Hex, Binary, Unsigned	8-bit
DATE	32-bit BCD, Hex, Binary, Unsigned	32-bit
DINT	32-bit BCD, Hex, Binary, Signed	32-bit
DWORD	32-bit BCD, Hex, Binary, Unsigned	32-bit
INT	16-bit BCD, Hex, Binary, Signed	16-bit
REAL	32-bit Float	32-bit
STRING	ASCII input and ASCII display	
TIME	32-bit BCD, Hex, Binary, Unsigned	32-bit
TOD	32-bit BCD, Hex, Binary, Unsigned	32-bit
UDINT	32-bit BCD, Hex, Binary, Unsigned	32-bit
UINT	16-bit BCD, Hex, Binary, Unsigned	16-bit
WORD	16-bit BCD, Hex, Binary, Unsigned	16-bit

**\*Note1:** Mapping ebool type to external IO may cause unknown communication errors. It is recommended to use bool type for mapping.

## Support Tables:

Variables table

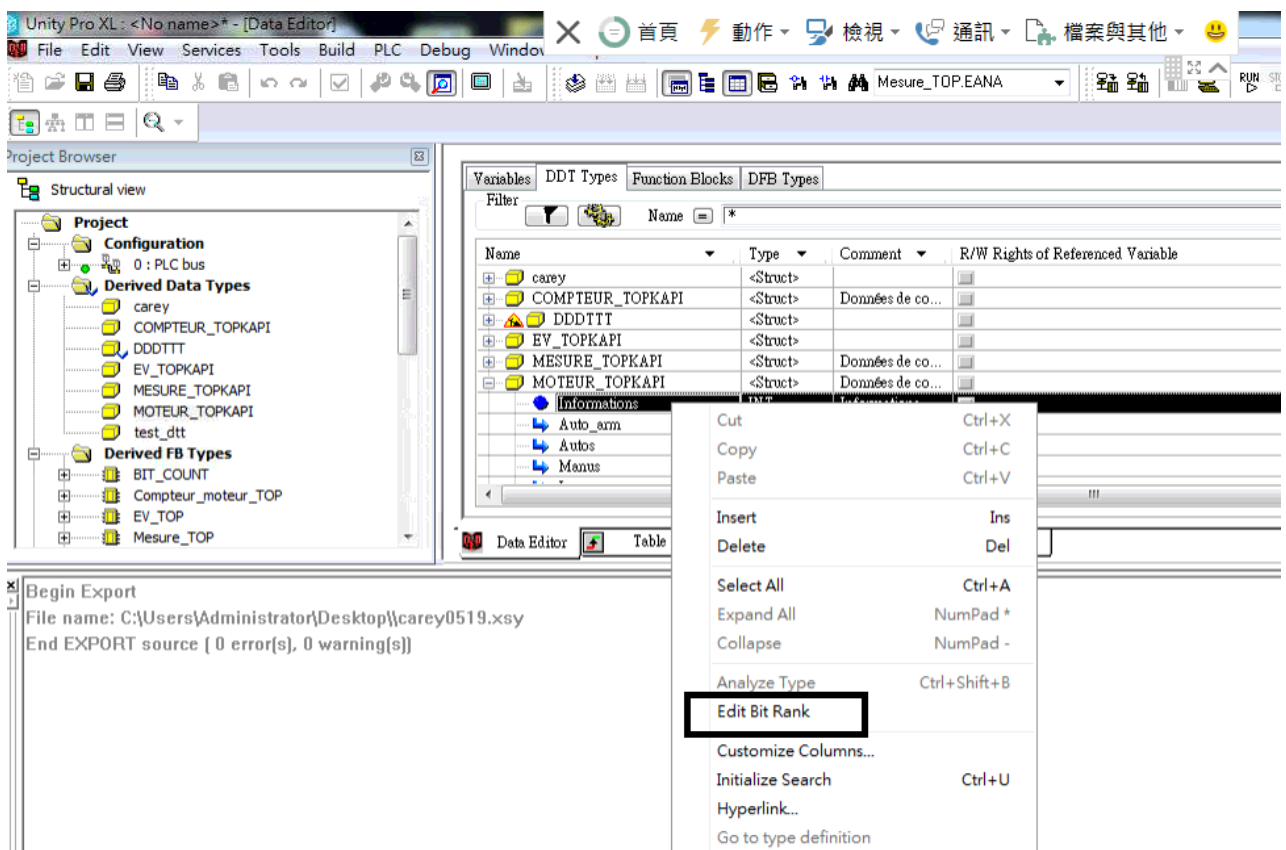
Derived data types table

Structure

Array (Supported one dimension)

Array data structure

\*[Edit Bit Rank] The generated address is not supported.

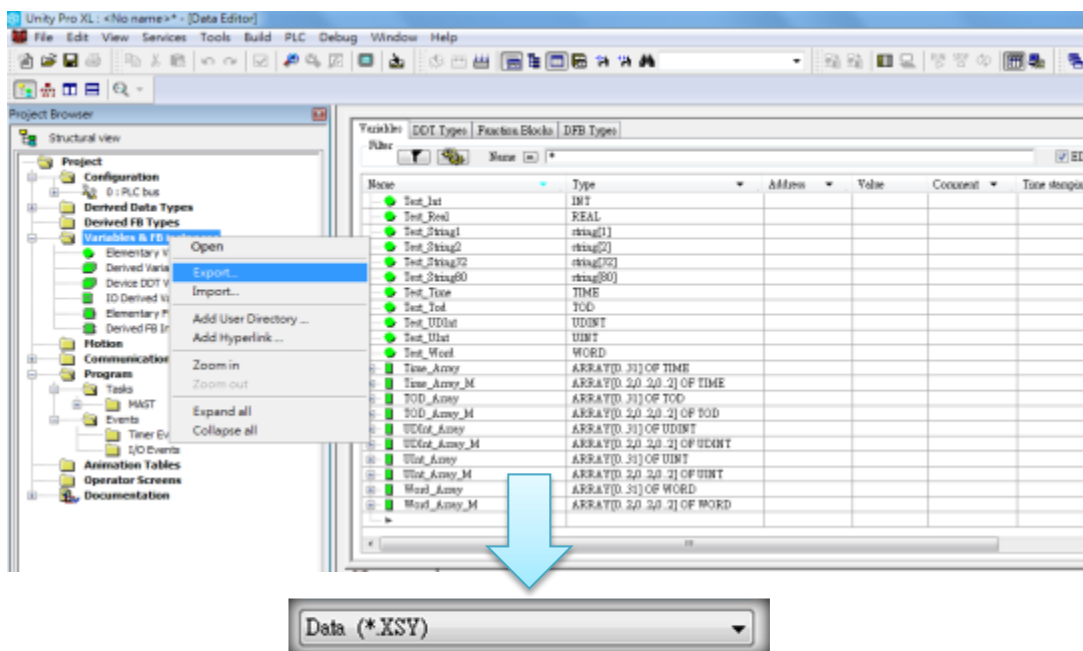


The screenshot shows the Unity Pro XL Data Editor interface. On the left, the Project Browser displays a tree structure under 'Derived Data Types' including 'carey', 'COMPTEUR\_TOPKAPI', 'DDDTT', 'EV\_TOPKAPI', 'MESURE\_TOPKAPI', 'MOTEUR\_TOPKAPI', and 'test\_dtt'. The main window shows a table of these types. A context menu is open over the 'Moteur\_TOPKAPI' entry, with the 'Edit Bit Rank' option highlighted. Below the table, a 'Begin Export' dialog box is visible, showing the file name 'C:\Users\Administrator\Desktop\carey0519.xsy' and the message 'End EXPORT source ( 0 error(s), 0 warning(s))'.

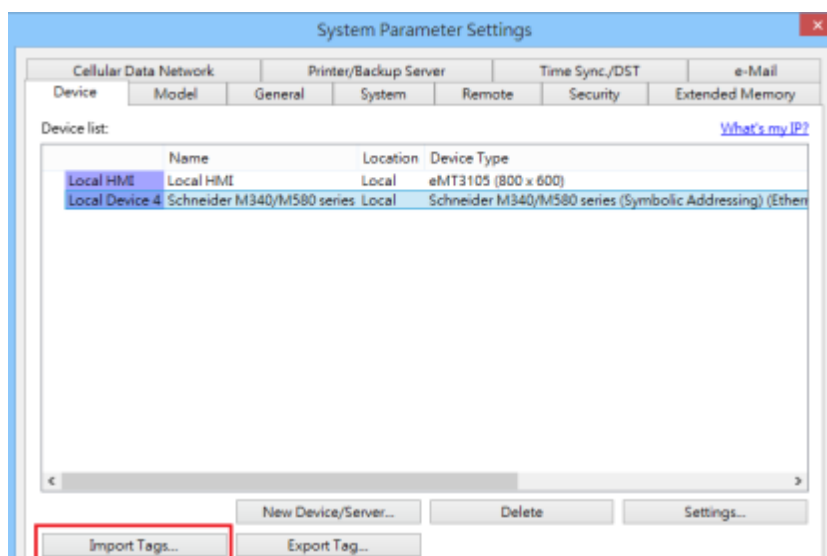
Name	Type	Comment	R/W Rights of Referenced Variable
carey	<Struct>		
COMPTEUR_TOPKAPI	<Struct>	Données de co...	
DDDTT	<Struct>		
EV_TOPKAPI	<Struct>		
MESURE_TOPKAPI	<Struct>	Données de co...	
MOTEUR_TOPKAPI	<Struct>	Données de co...	

## How to Import Tags:

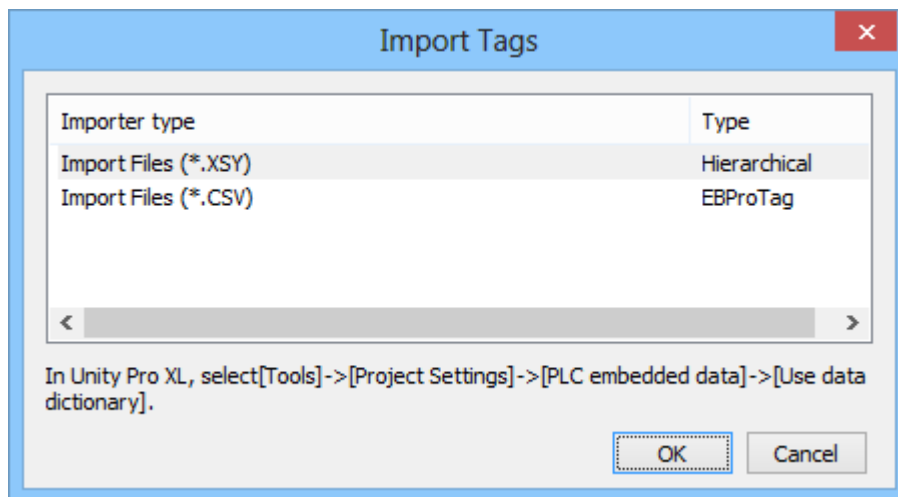
1. Export file (\*.XSY) from PLC Software.



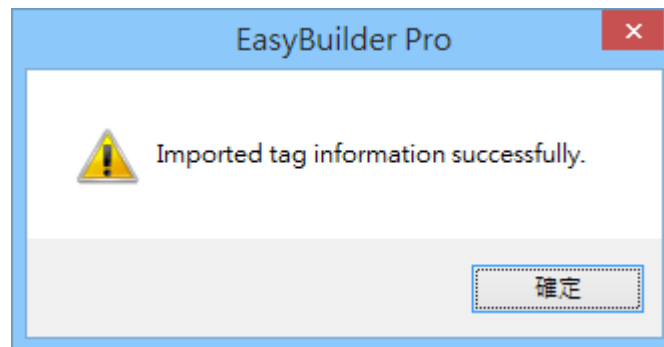
2. Import tags in the driver settings of EasyBuilder Pro.



3. Select the file format to import.



4. Import results dialog.



## Wiring Diagram:

**Ethernet cable:**

